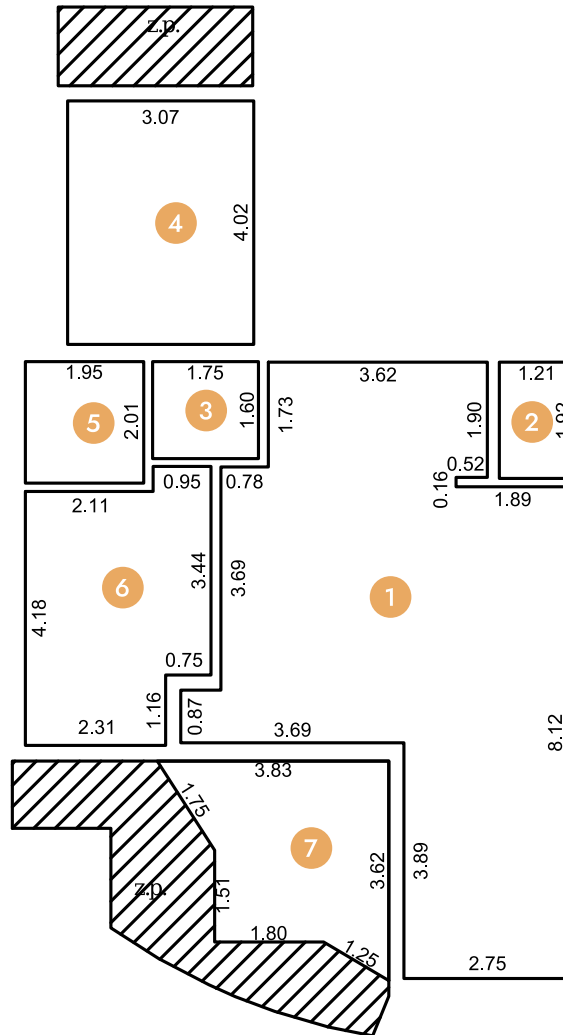




Montesa Hill - PD41





1	Living room	43.32m ²
2	WC	2.32m ²
3	Corridor	2.80m ²
4	Bedroom	12.34m ²
5	WC	3.92m ²
6	Bedroom	12.33m ²
7	Terrace	9.64m ²

101m²
Total

14m²
Greening

-  Sea view
-  Floor heating

-  Air conditioning
-  Fiber optics network