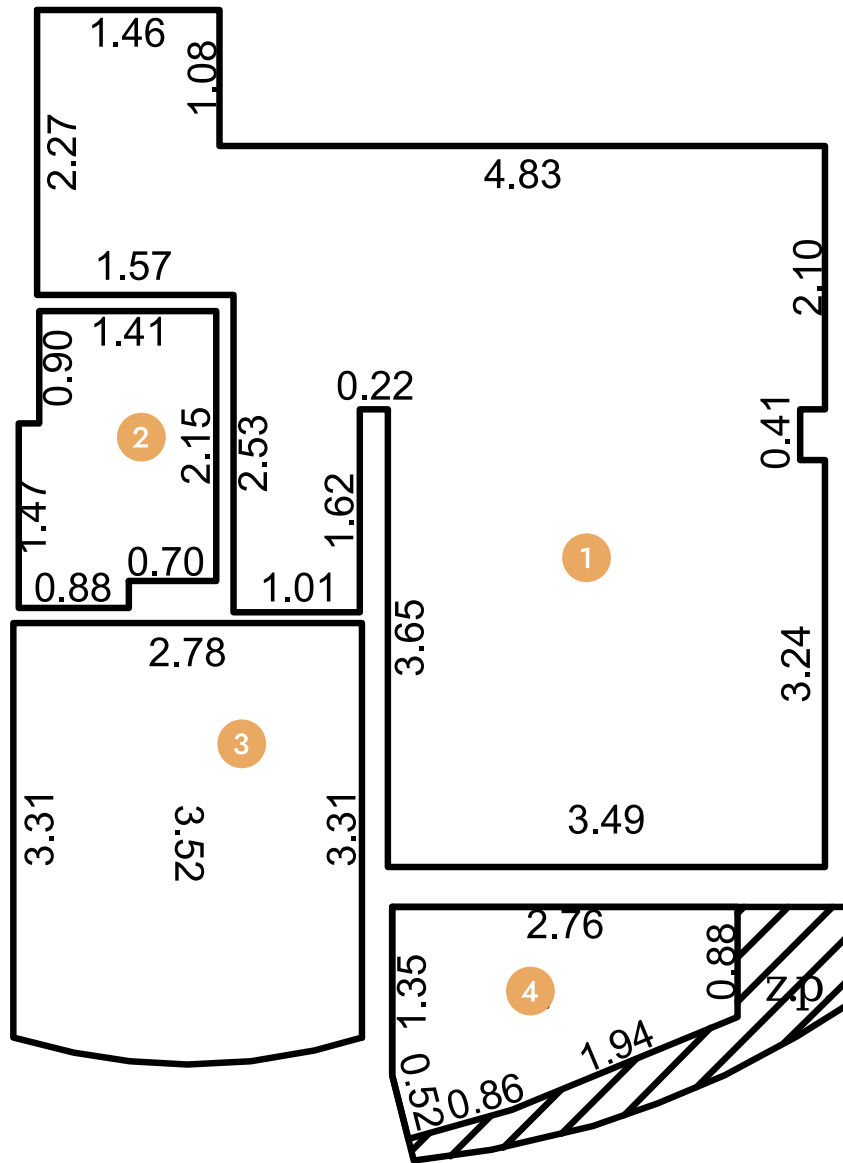




# Montesa Hill - PD30





1	Living room	27.65m <sup>2</sup>
2	WC	3.44m <sup>2</sup>
3	Bedroom	9.58m <sup>2</sup>
4	Terrace	3.90m <sup>2</sup>

**47m<sup>2</sup>**  
Total

**2m<sup>2</sup>**  
Greening

-  Sea view
-  Floor heating

-  Air conditioning
-  Fiber optics network