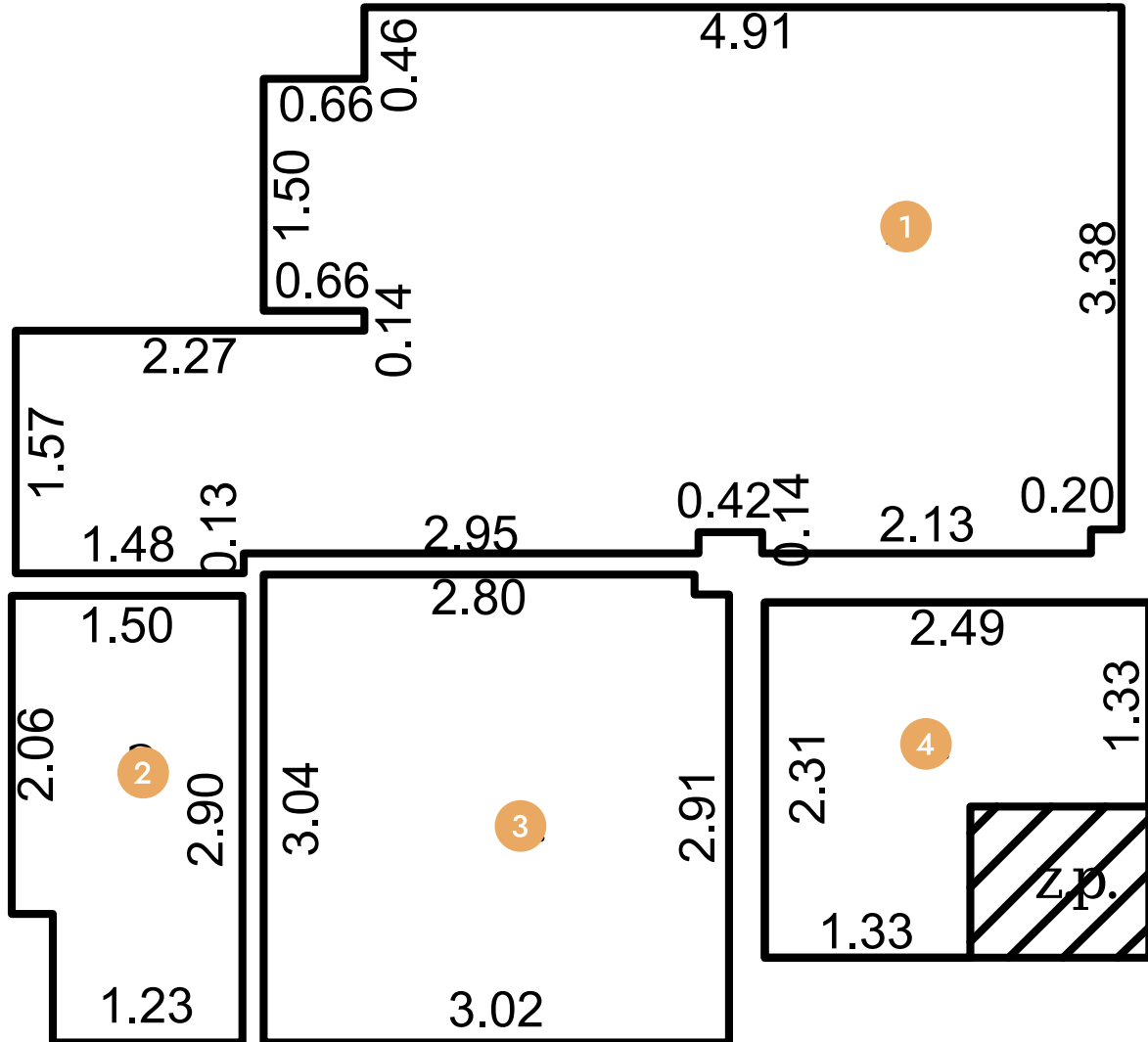



# Montesa Hill - PD29





1	Living room .....	21.79m <sup>2</sup>
2	WC .....	4.12m <sup>2</sup>
3	Bedroom .....	9.15m <sup>2</sup>
4	Terrace .....	4.62m <sup>2</sup>

**42m<sup>2</sup>**  
Total

**1m<sup>2</sup>**  
Greening

 Sea view  
 Floor heating

 Air conditioning  
 Fiber optics network